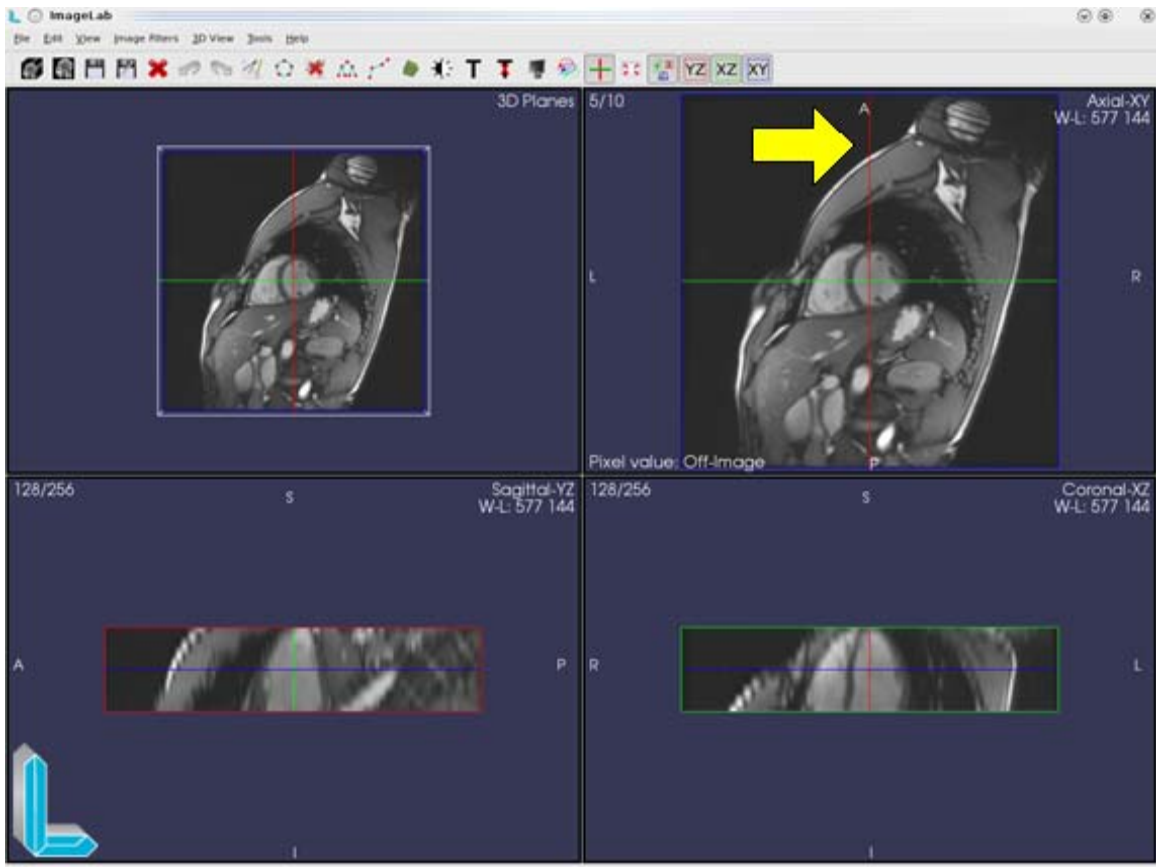
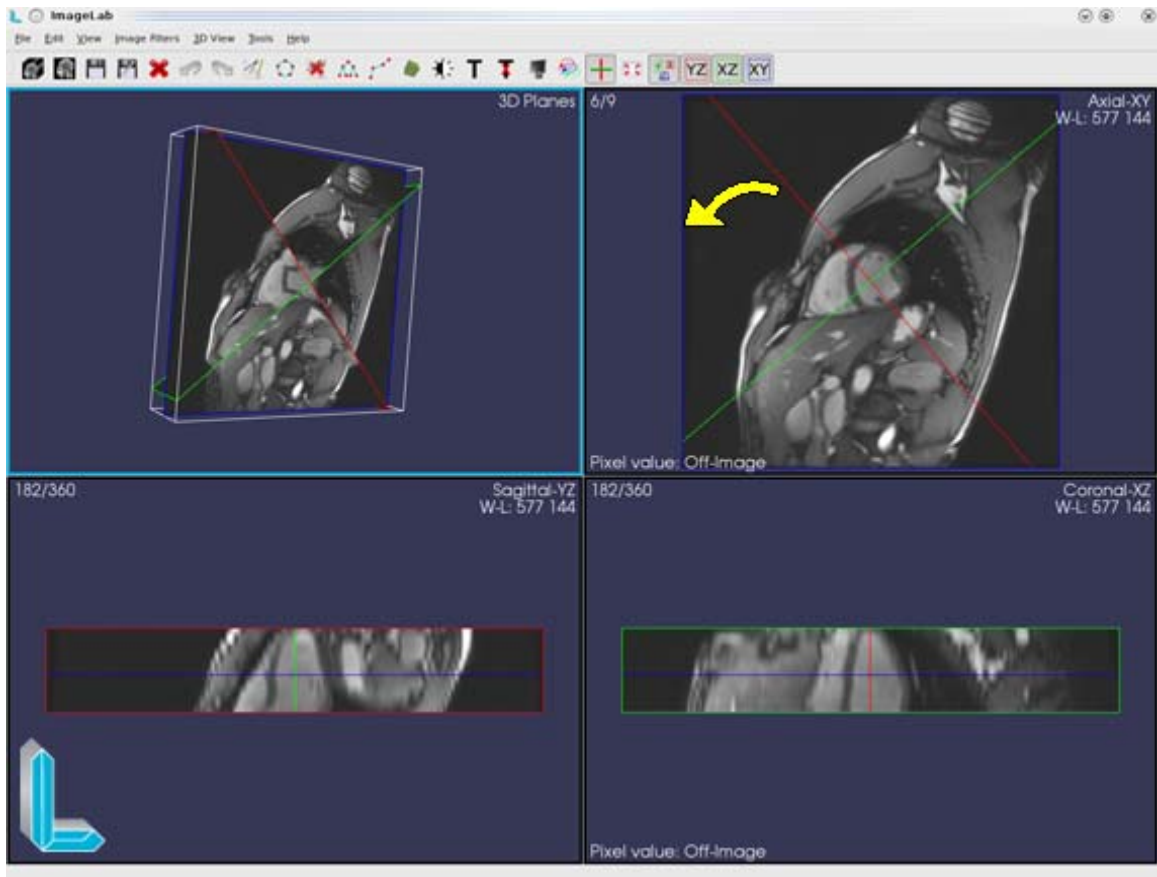


## CHANGING 3D IMAGES PLANES TO OBLIQUE MODE

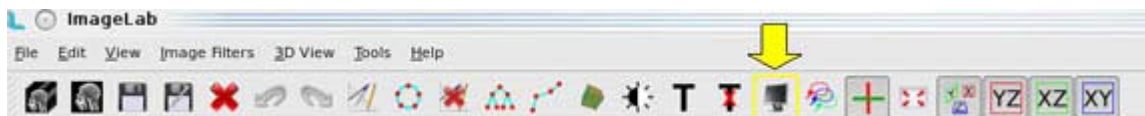
1. Open a set of dicom images.
2. In 2D images that appear, click one of the colored lines intersect the picture. These lines indicate the position of the other two images.



3. Make a circular motion to rotate the image.



4. To navigate the image, click on the image, not the lines that perform the rotation, and the plans of the other two images will be changed as the mouse drag.
5. To return to the starting position the images, simply click the "Reset View" on the toolbar or the menu "Tools" → "Reset View".



6. To show / hide the lines that intersect the images, click the "enable / disable cross" on the toolbar or the menu "View" → "Cross Planes" or by pressing "ctrl + p".

